

RECOGNITION FROM STUDENTS' PERSPECTIVE

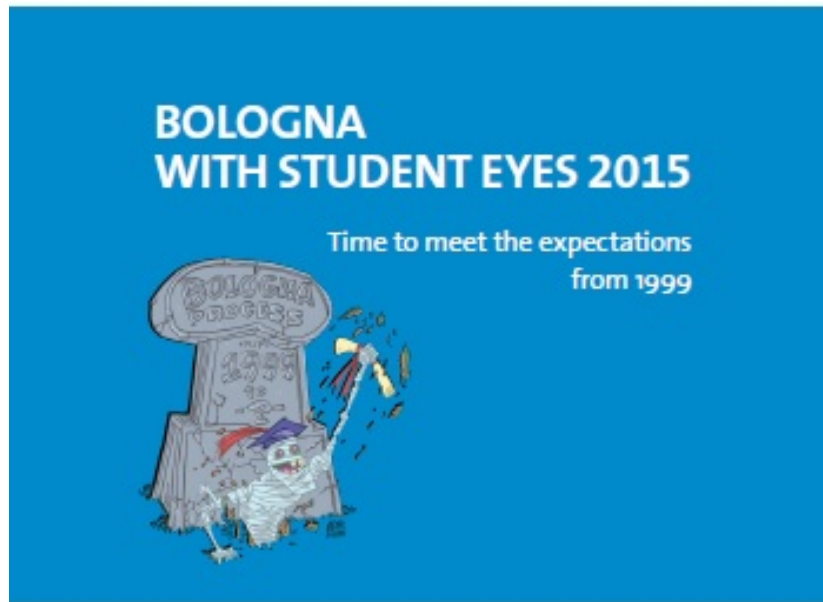


Urša Leban
Seminar on Substantial Differences
Bologna, Italy
26.6.2019



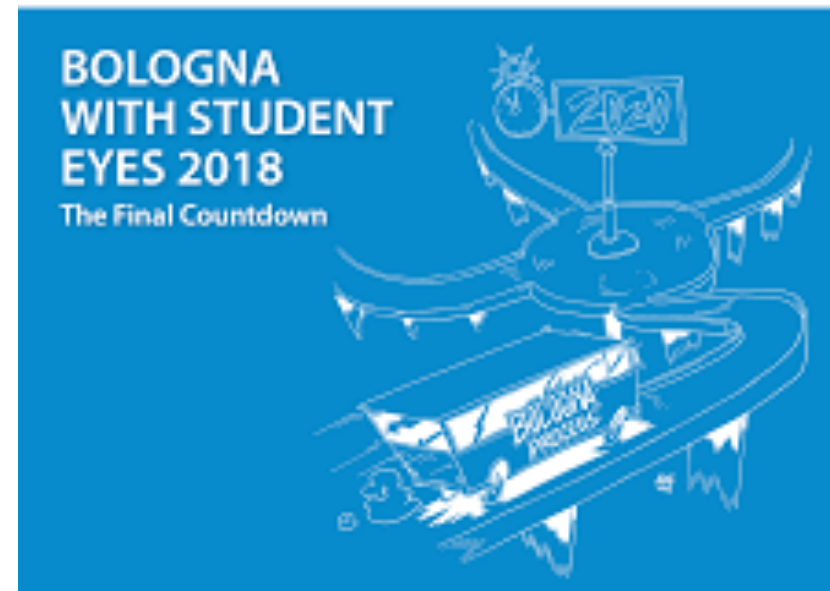
Bologna With Student Eyes

The European Students' Union 



 Co-funded by the Erasmus+ Programme of the European Union

The European Students' Union 



 Co-funded by the Erasmus+ Programme of the European Union




The European Students' Union

Who are we?

- The European Students' Union (ESU) is the umbrella organisation of 45 National Unions of Students (NUS) from 39 countries.



1. Recognition procedures

2015

- Seen as **non-discriminatory**
- 9 NUSs (24%) report procedures being transparent
- 27/38 unions report about having difficulties with recognition of **mobility credits**
- 14/38 NUSs report **no fixed time period** for a procedure to be finished

2018

- 42% of NUSs see it as a non-discriminatory, 16% do not
- 16 NUSs (37%) see it as a **transparent** procedure, 32% do not
- **one third** of the unions (13/43) reported having problems with recognition of mobility programmes
- 18/45 see it as a **complex procedure**

1. Recognition procedures

2015

- Procedures mostly done at ENIC/NARIC, 20/37 reported HEI to be involved and 12/37 at national governments
- foreign qualification and credits => HEI
- Final decision: 16/37 for ENIC/NARIC

2018

- Majority of credits and qualifications are being assessed by HEI (27/43) , ENIC/NARIC 37%, national governments 23%
- Final decision: in 14% done by ENIC/NARIC (they have more of a consultative role then making a final decision)

2. Automatic recognition

2015

- 14/38 NUSs reported having bilateral agreements
- 11/38 reported having recognition based on the implementation of Bologna tools
- 11/38 NUSs do not report of any form of AR

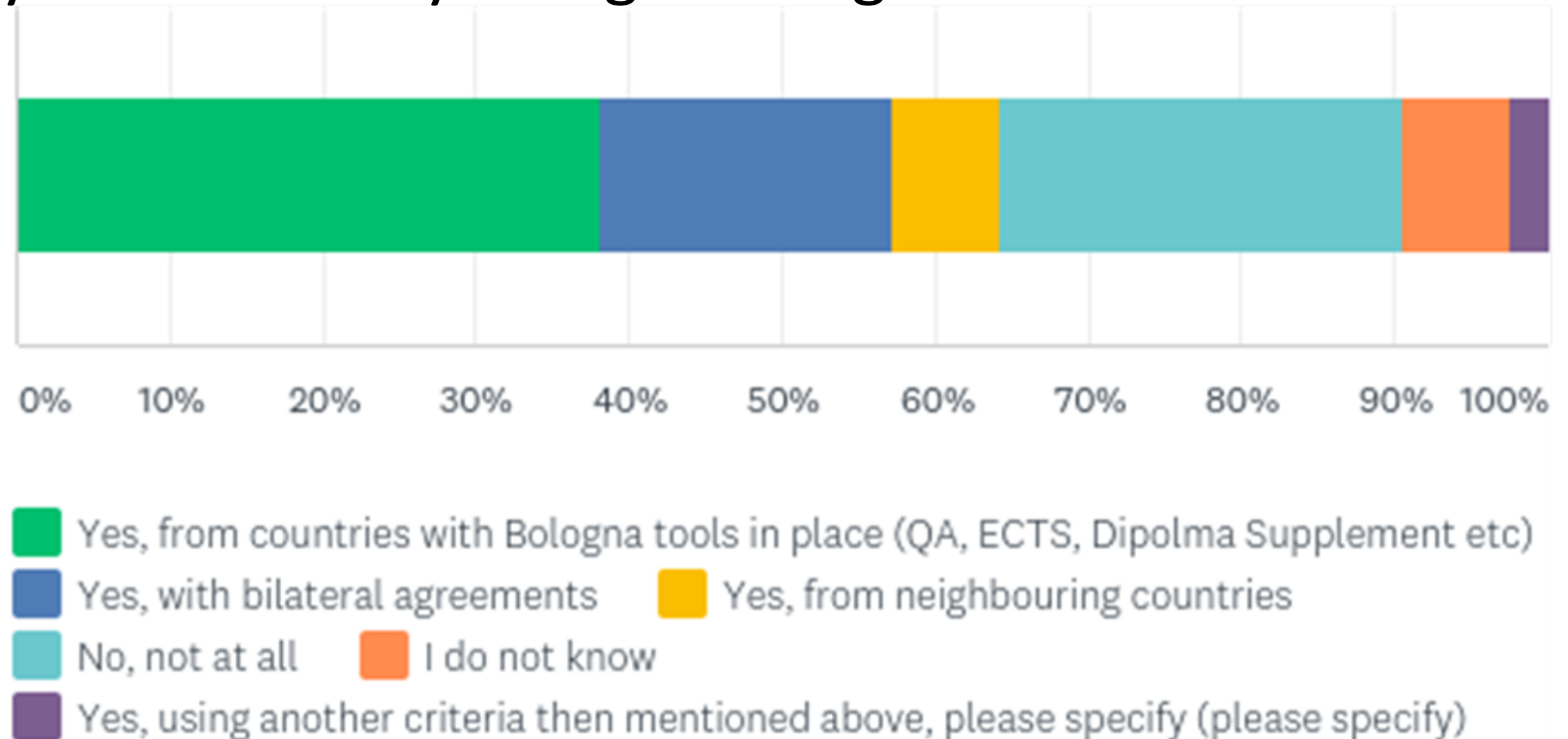
Main reasons for no AR named by NUSs:

- various implementation levels of Bologna Process reforms and tools (23/37)
- lack of trust between the EHEA countries (22/37)
- some concerns regarding regulated professions (20/38)

2. Automatic recognition

2018

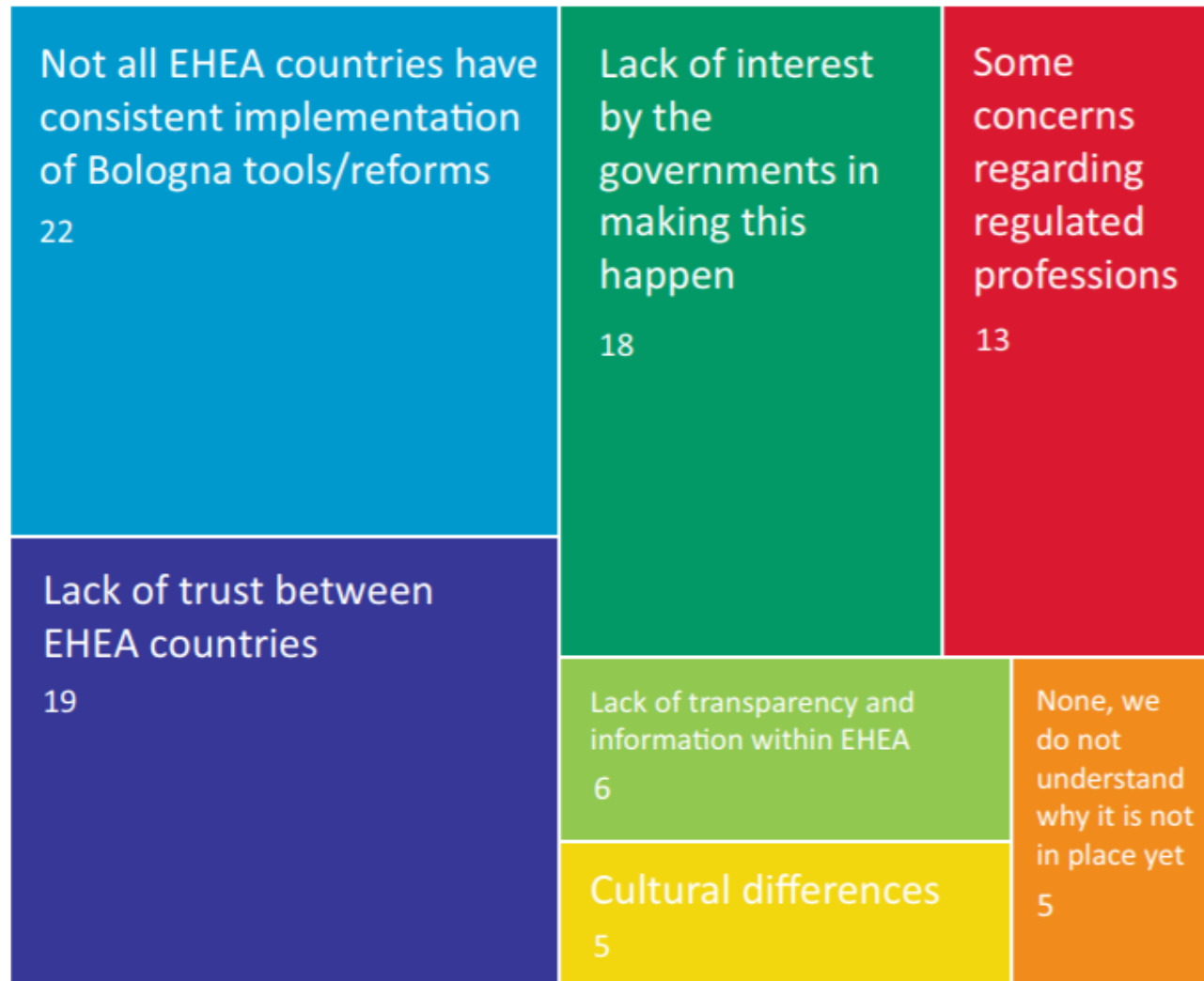
Does your country automatically recognize degrees from other EHEA countries?



2. Automatic recognition

2018

What are the main barriers for having automatic recognition of degrees within EHEA?



2. Automatic recognition: should it be a priority?

2015 „An overwhelming majority of unions responded that they support automatic recognition, and even 25 of 38 consider it a priority for EHEA.“

2018 „...almost all (93%) of the students' unions support automatic recognition fully or with only some concerns. In addition, around 47% (20 out of 43) of the unions consider automatic recognition a high or essential priority of the Bologna process.“

3. Recognition of prior learning

2015

- 14/38 NUSs reported having established systems
- 15/38 NUSs have some initiatives in place
- 4/38 NUSs report no RPL

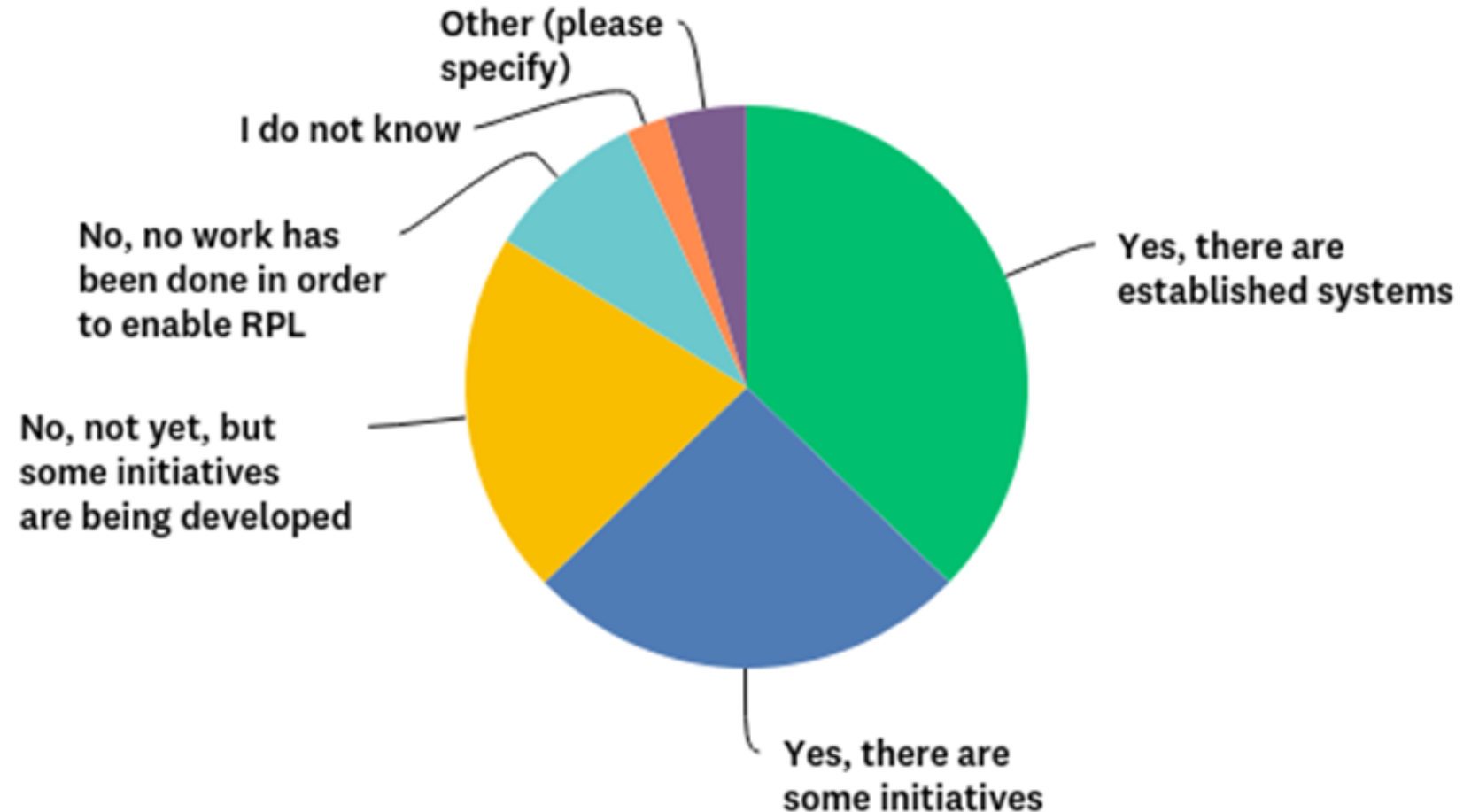
2018

- 63% NUSs: established procedures for recognition of prior learning
- 40% NUSs: no procedures (yet)

3. Recognition of prior learning

2018

Is the
Recognition of
Prior Learning
(RPL)
possible in your
country?



3. Recognition of prior learning

2015

The major barriers

- the lack of trust in the validation of qualifications (24/36)
- the limited information and a lack of trust among main stakeholders (20/36)
- the lack of National Qualification Frameworks (14/36)
- legislation limiting RPL (13/36)
- the lack of resources (11/36)

3. Recognition of prior learning

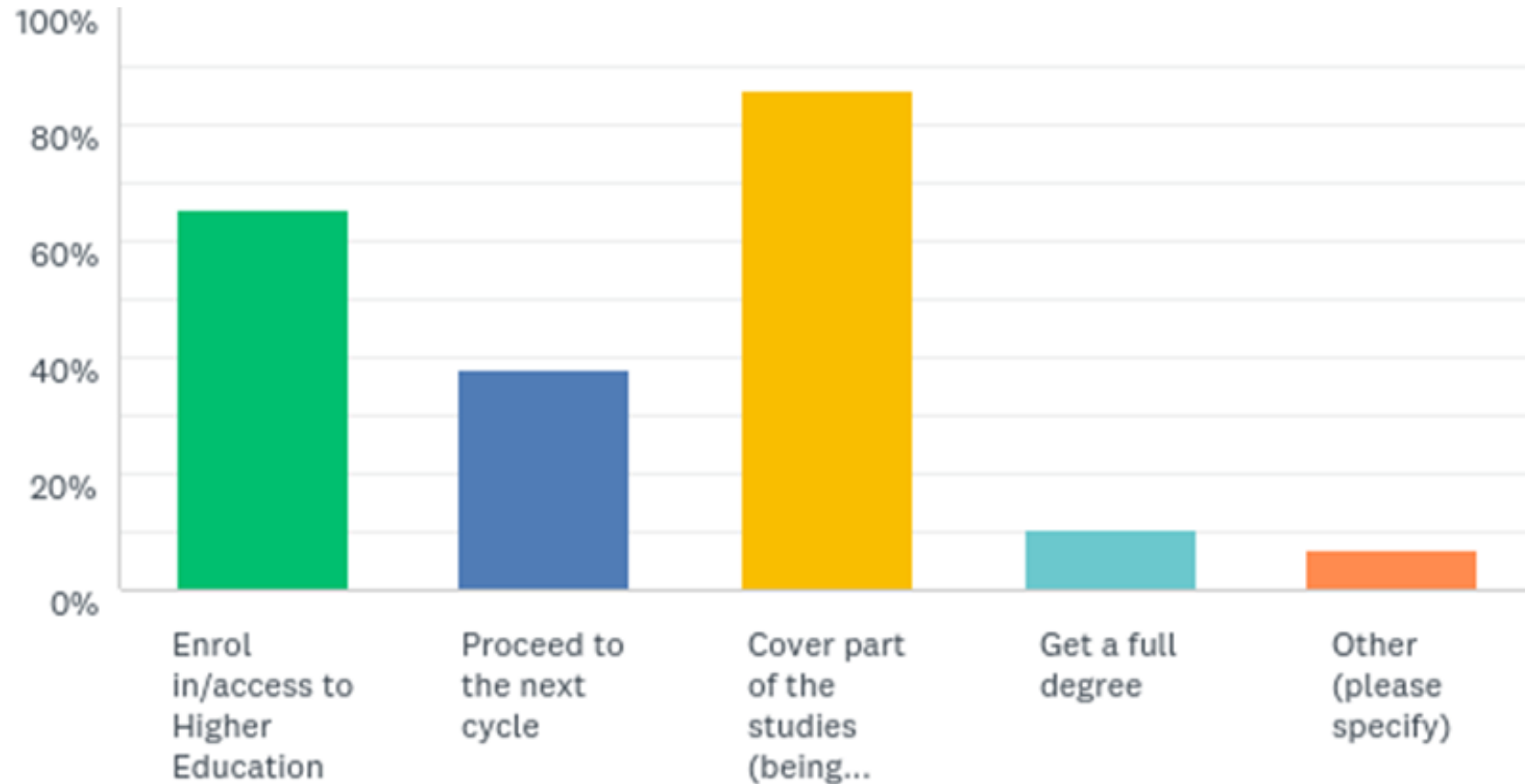
Figure 7.3: Main barriers to recognition of prior learning

2018
Major
barriers



3. Recognition of prior learning

2018
What is
RPL
mostly
used
for?



Group work

Let`s look through the eyes of a student!

- How do these obstacles impact a student trying to enroll/already enrolled in HEI?
- What are the key points that need to be communicated with students? And how?
- Try to think practical!
- Create few key points/suggestions!